

# PHOTOMETRIC TEST REPORT

---

DECOR PRO ROUND FIXED -  
TEXTURED WHITE - 4002627

astro

## DECOR PRO ROUND FIXED - TEXTURED

astro

### LIGHT EFFICIENCY:

108 Lumen/Watt

### LIGHT QUALITY:

CRI: 96.3

### COLOR TEMPERATURE:

2704 K

OUTPUT: 1269 lm

PEAK: 2354 cd

POWER: 11.7 W

PF: 0.95



Tracking number: [n/a](#)

Product name:

Decor Pro Round Fixed - Textured White - 4002627

Item number:

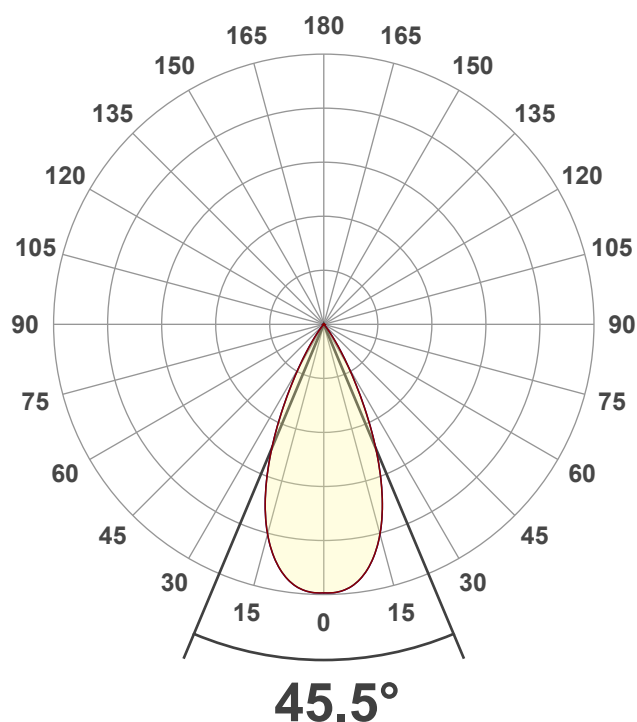
DRF-TW-HE27G1-50G1-X-D1

Date and time:

30/01/2025 15:20:17

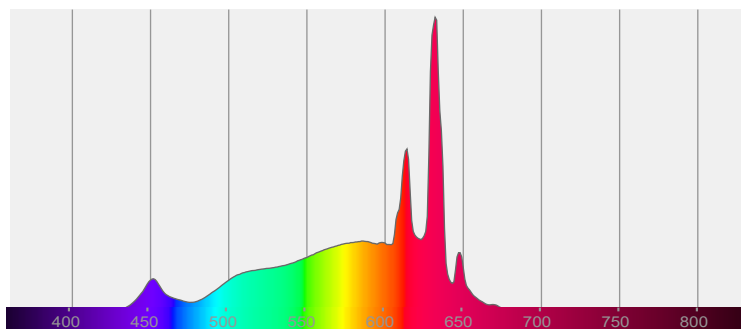
Description:

IP20 LED Downlight

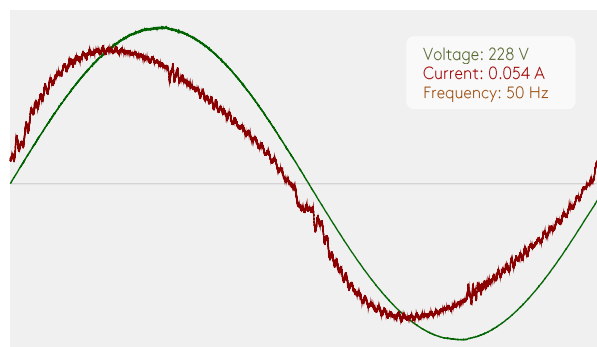


CIE 1931  
x: 0.460  
y: 0.412

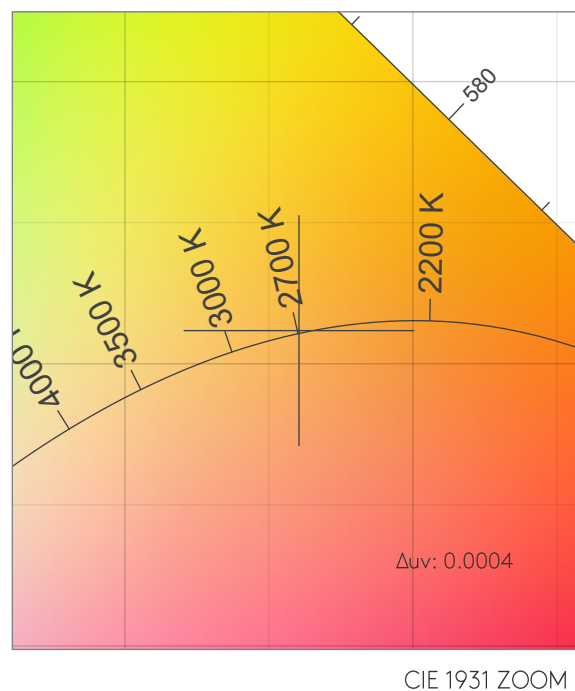
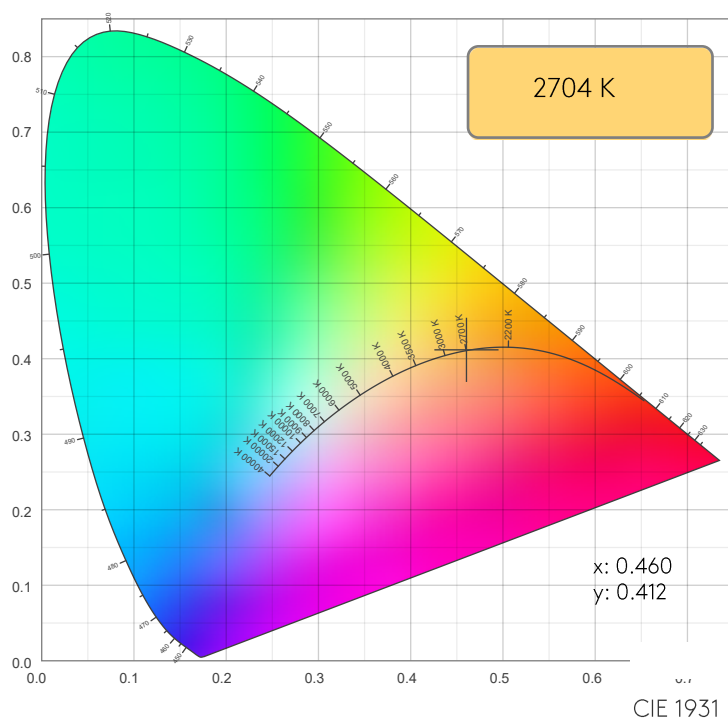
### SPECTRA



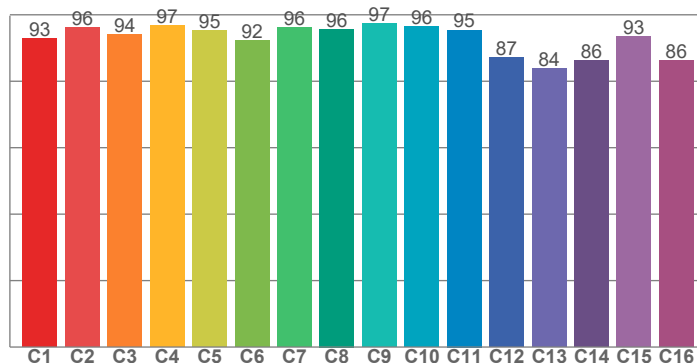
### POWER



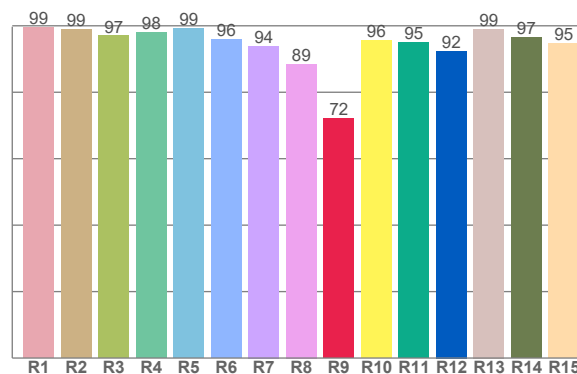
## COLOR DETAILS



TM30: 93.4



CRI: 96.3 (R1-R8)



CRI R values, only R1-R8 are used to calculate final CRI value

R1	R2	R3	R4	R5	R6	R7	R8	R9	R10	R11	R12	R13	R14	R15
99.4	99.0	97.0	98.0	99.2	95.8	93.9	88.5	72.1	95.6	94.9	92.4	99.0	96.5	94.7

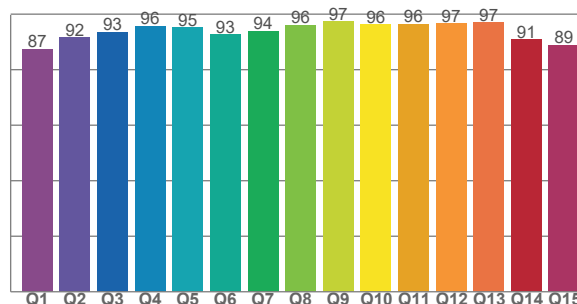
TM30 C values, 16 binned values out of total of 99 C values

C1	C2	C3	C4	C5	C6	C7	C8	C9	C10	C11	C12	C13	C14	C15	C16
92.7	96.1	94.0	96.8	95.3	92.3	96.1	95.7	97.3	96.4	95.4	87.1	84.0	86.3	93.5	86.2

CQS Q values

Q1	Q2	Q3	Q4	Q5	Q6	Q7	Q8	Q9	Q10	Q11	Q12	Q13	Q14	Q15
87.4	91.6	93.5	95.8	95.2	92.7	94.0	96.1	97.4	96.2	96.4	96.7	97.0	90.9	89.0

CQS: 92.9



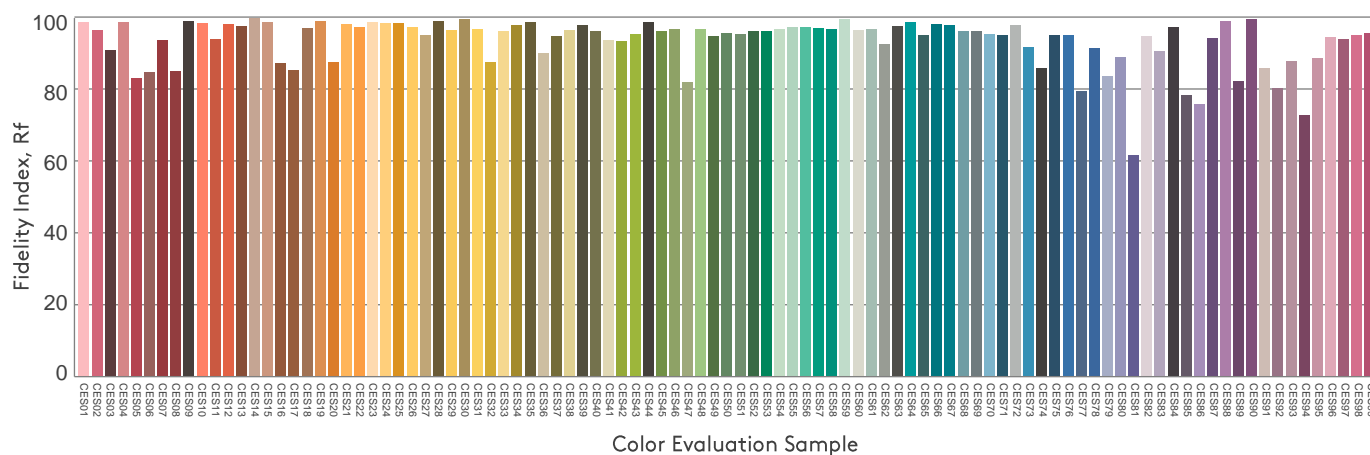
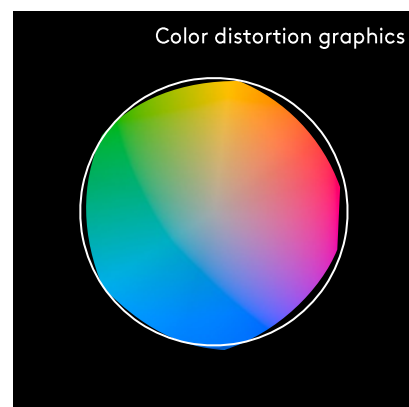
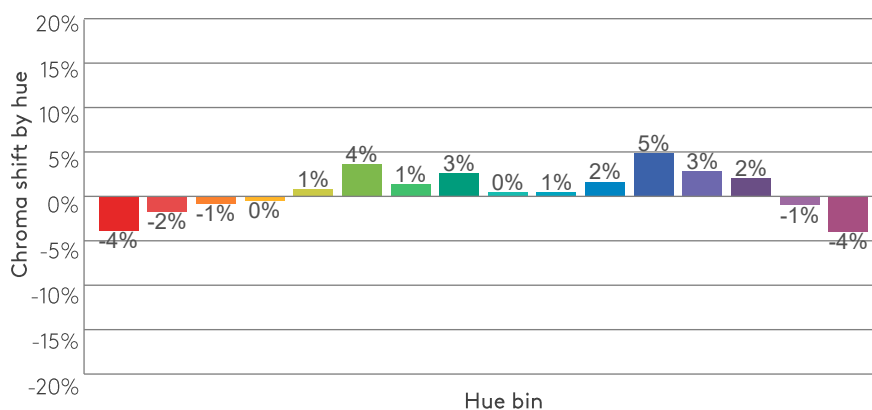
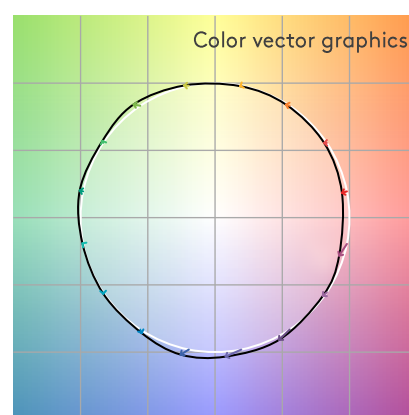
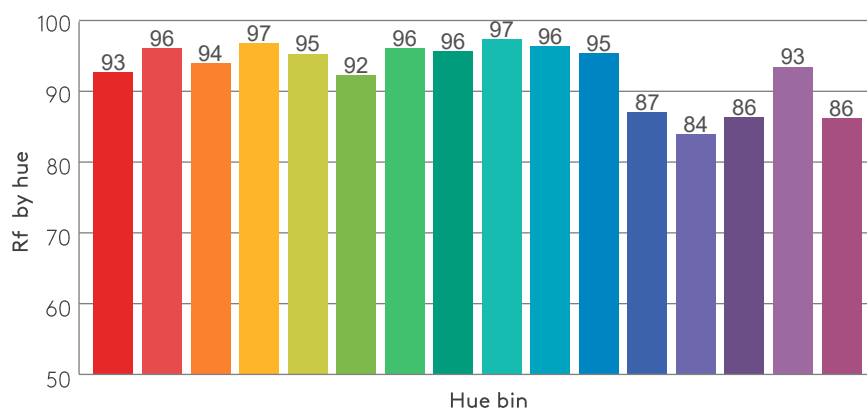
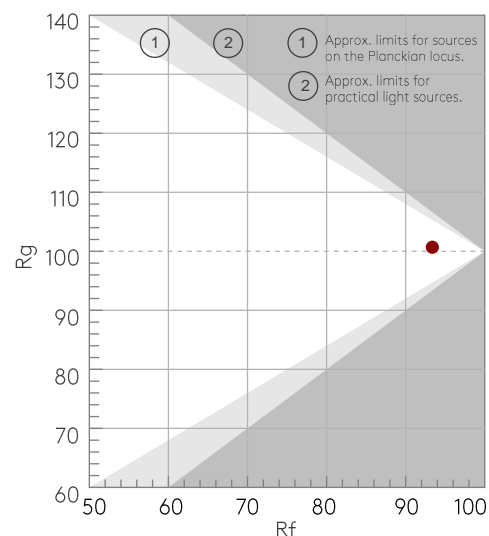
## COLOR PARAMETERS

Color temperature	Color rendering index	Red component	Color fidelity	Color gamut	Color quality scale	Color coordinate cie 1931	Color coordinate cie 1931	Color coordinate	Color coordinate	Color deviation from black body
CCT	CRI	CRI R9	TM30 Rf	TM30 Rg	CQS	x	y	u	v	$\Delta uv$
2704 K	96.3	72.1	93.4	100.7	92.9	0.460	0.412	0.262	0.352	0.0004

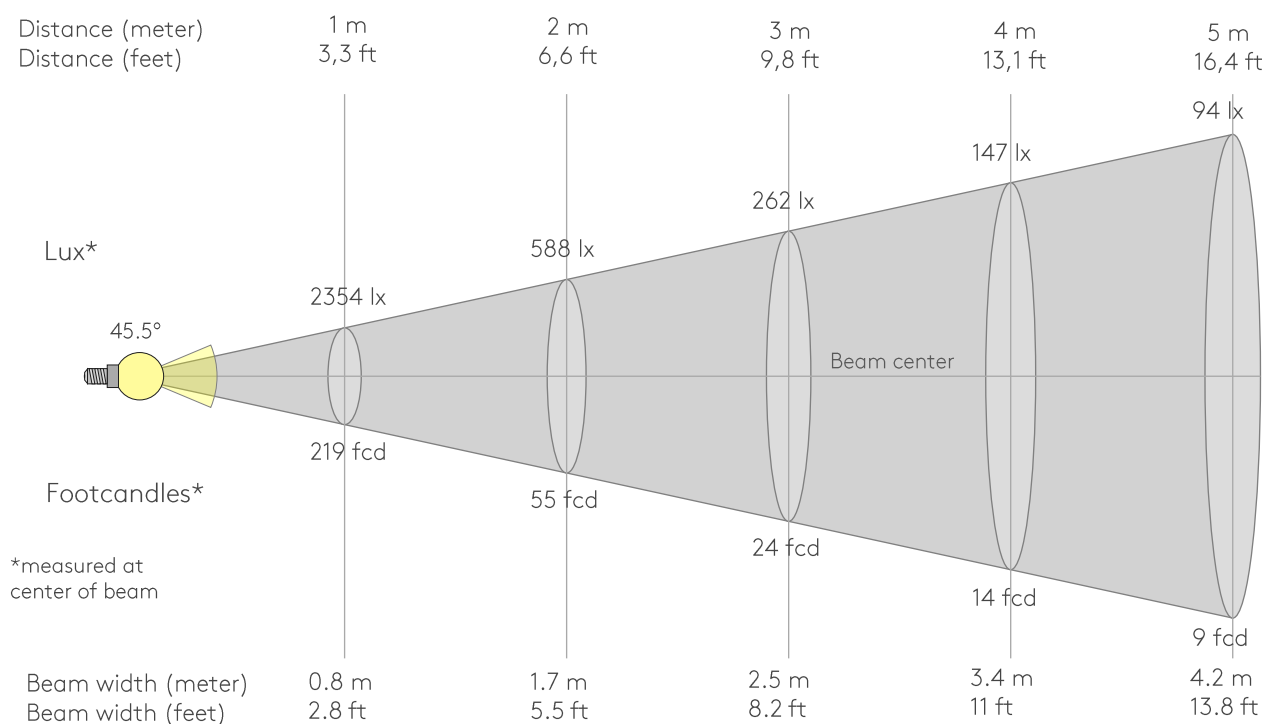
Rf 93.4  
Fidelity index Rf

Rg 100.7  
Gammut index Rg

Hue Bin	Rf	Graphic shifts (%)	
		Chroma	Hue
1	93	-4%	0%
2	96	-2%	1%
3	94	-1%	3%
4	97	0%	1%
5	95	1%	3%
6	92	4%	4%
7	96	1%	-1%
8	96	3%	0%
9	97	0%	0%
10	96	1%	1%
11	95	2%	2%
12	87	5%	-5%
13	84	3%	-12%
14	86	2%	-11%
15	93	-1%	-4%
16	86	-4%	-10%



## BEAM DETAILS



Beam intensities from 1-20m

1m	2m	3m	4m	5m	6m	7m	8m	9m	10m	11m	12m	13m	14m	15m	16m	17m	18m	19m	20m
3.3ft	6.6ft	9.8ft	13.1ft	16.4ft	19.7ft	23ft	26.2ft	29.5ft	32.8ft	36.1ft	39.4ft	42.7ft	45.9ft	49.2ft	52.5ft	55.8ft	59.1ft	62.3ft	65.6ft
2354lx	588lx	262lx	147lx	94lx	65lx	48lx	37lx	29lx	24lx	19lx	16lx	14lx	12lx	10lx	9lx	8lx	7lx	7lx	6lx
218.7fcd	54.7fcd	24.3fcd	13.7fcd	8.7fcd	6.1fcd	4.5fcd	3.4fcd	2.7fcd	2.2fcd	1.8fcd	1.5fcd	1.3fcd	1.1fcd	1fcd	0.9fcd	0.8fcd	0.7fcd	0.6fcd	0.5fcd

Intensities in 0° c-plane

0°	2°	4°	6°	8°	10°	12°	14°	16°	18°	20°	22°	24°	26°	28°	30°	32°	34°	36°	38°
2354	2354	2340	2310	2259	2186	2090	1971	1829	1661	1470	1260	1039	816	611	436	294	184	106	55
100%	100%	99%	98%	96%	93%	89%	84%	78%	71%	62%	54%	44%	35%	26%	19%	12%	8%	5%	2%

Intensities in 90° c-plane

0°	2°	4°	6°	8°	10°	12°	14°	16°	18°	20°	22°	24°	26°	28°	30°	32°	34°	36°	38°
2354	2354	2340	2310	2259	2186	2090	1971	1829	1661	1470	1260	1039	816	611	436	294	184	106	55
100%	100%	99%	98%	96%	93%	89%	84%	78%	71%	62%	54%	44%	35%	26%	19%	12%	8%	5%	2%

Intensities in 180° c-plane

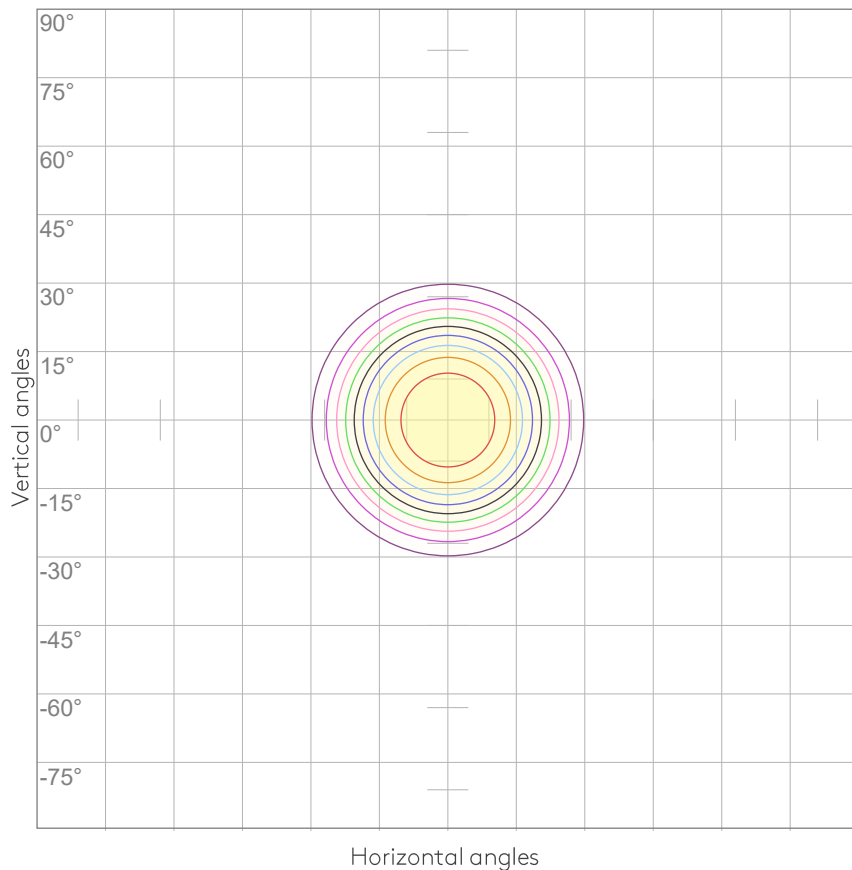
0°	2°	4°	6°	8°	10°	12°	14°	16°	18°	20°	22°	24°	26°	28°	30°	32°	34°	36°	38°
2354	2354	2340	2310	2259	2186	2090	1971	1829	1661	1470	1260	1039	816	611	436	294	184	106	55
100%	100%	99%	98%	96%	93%	89%	84%	78%	71%	62%	54%	44%	35%	26%	19%	12%	8%	5%	2%

Intensities in 270° c-plane

0°	2°	4°	6°	8°	10°	12°	14°	16°	18°	20°	22°	24°	26°	28°	30°	32°	34°	36°	38°
2354	2354	2340	2310	2259	2186	2090	1971	1829	1661	1470	1260	1039	816	611	436	294	184	106	55
100%	100%	99%	98%	96%	93%	89%	84%	78%	71%	62%	54%	44%	35%	26%	19%	12%	8%	5%	2%

Beam angle 50%	Field angle 10%	Cutoff angle 2,5%	Intensity ratio in 120° cone	Intensity ratio in 90° cone
45.5°	66.1°	75.7°	99.8%	99.6%

ISO CANDELA DIAGRAM



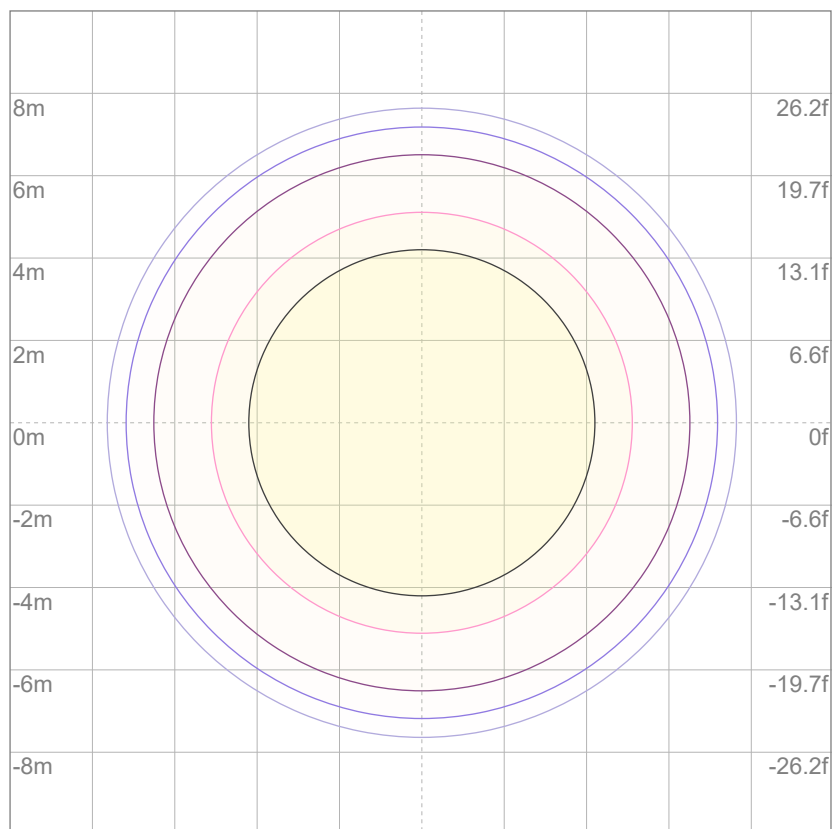
10%	235 cd
20%	471 cd
30%	706 cd
40%	942 cd
50%	1177 cd
60%	1412 cd
70%	1648 cd
80%	1883 cd
90%	2119 cd

Conditions:

Number of c-planes: 8

Candela at center: 2354 cd

ISO LUX DIAGRAM



Mounting height: 10 meters (33 feet)

3%	0.706 lx
5%	1.18 lx
10%	2.35 lx
30%	7.06 lx
50%	{LUX_10M50} lx

Conditions:

Number of c-planes: 8

Lux at center: 23.5 lx

Lux distribution on a surface when lamp is mounted at 10 meters from the surface.

## UGR

## GLARE EVALUATION ACCORDING TO UGR

p Ceiling		70	70	50	50	30	70	70	50	50	30
p Walls		50	30	50	30	30	50	30	50	30	30
p Floor		20	20	20	20	20	20	20	20	20	20
Room size X      Y		Viewing direction at right angles to lamp axis					Viewing direction parallel to lamp axis				
2H	2H	17.7	18.2	17.8	18.4	18.6	17.7	18.2	17.8	18.4	18.6
	3H	17.4	18.1	17.8	18.3	18.4	17.4	18.1	17.8	18.3	18.4
	4H	17.3	18.0	17.7	18.2	18.4	17.3	18.0	17.7	18.2	18.4
	6H	17.3	17.9	17.6	18.2	18.5	17.3	17.9	17.6	18.2	18.5
	8H	17.3	17.8	17.6	18.1	18.5	17.3	17.8	17.6	18.1	18.5
	12H	17.2	17.7	17.6	18.1	18.5	17.2	17.7	17.6	18.1	18.5
4H	2H	17.3	18.0	17.7	18.2	18.4	17.3	18.0	17.7	18.2	18.4
	3H	17.2	17.7	17.6	18.1	18.5	17.2	17.7	17.6	18.1	18.5
	4H	17.1	17.5	17.5	18.0	18.5	17.1	17.5	17.5	18.0	18.5
	6H	17.0	17.5	17.5	17.8	18.2	17.0	17.5	17.5	17.8	18.2
	8H	16.9	17.4	17.5	17.7	18.1	16.9	17.4	17.5	17.7	18.1
	12H	16.9	17.2	17.4	17.6	18.1	16.9	17.2	17.4	17.6	18.1
8H	4H	16.9	17.4	17.5	17.7	18.1	16.9	17.4	17.5	17.7	18.1
	6H	16.9	17.2	17.4	17.6	18.2	16.9	17.2	17.4	17.6	18.2
	8H	16.9	17.1	17.4	17.6	18.2	16.9	17.1	17.4	17.6	18.2
	12H	16.8	17.0	17.4	17.5	18.1	16.8	17.0	17.4	17.5	18.1
12H	4H	16.9	17.2	17.4	17.6	18.1	16.9	17.2	17.4	17.6	18.1
	6H	16.9	17.1	17.4	17.6	18.2	16.9	17.1	17.4	17.6	18.2
	8H	16.8	17.0	17.4	17.5	18.1	16.8	17.0	17.4	17.5	18.1
Variation of the observer position for the luminaire distance S											
S = 1.0H		6.6 / -19.6					6.6 / -19.6				
S = 1.5H		9.4 / -21.0					9.4 / -21.0				
S = 2.0H		11.4 / -21.6					11.4 / -21.6				
Standard table		n/a					n/a				
Correction summand		n/a					n/a				
Corrected glare indices referring to 1269 lm total luminous flux											

# DECOR PRO ROUND FIXED - TEXTURED

## LIGHT PLANNING

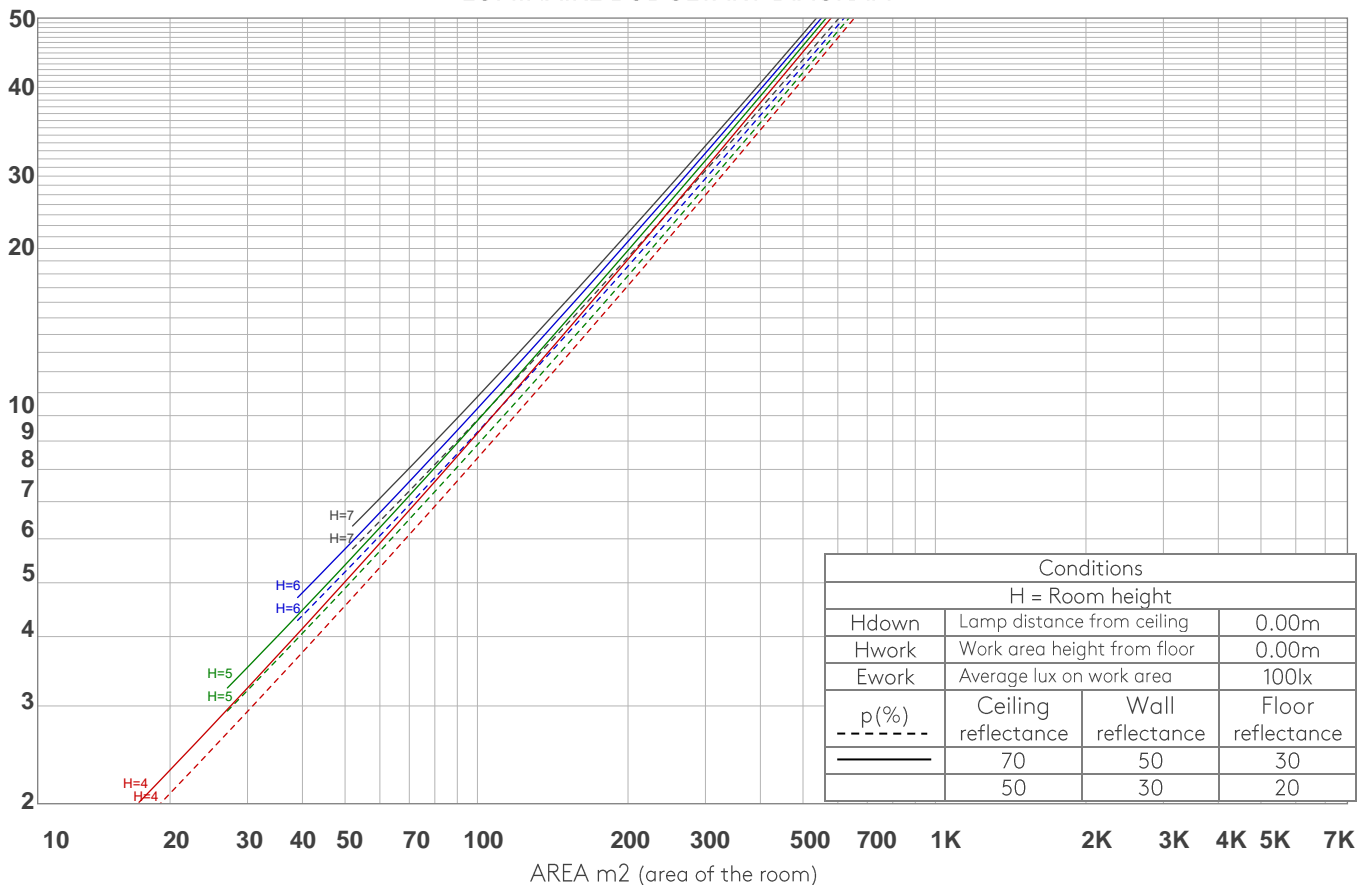
astro

### COEFFICIENTS OF UTILIZATION

Ceiling reflectance	80				70				50			30			10			0
Wall reflectance	70	50	30	10	70	50	30	10	50	30	10	50	30	10	50	30	10	0
Floor reflectance	20	20	20	20	20	20	20	20	20	20	20	20	20	20	20	20	20	0
RCR	(RCR: Room Cavity Ratio) Room Values are expressed as percentage of Lumens delivered to the task surface																	
0	119	119	119	119	116	116	116	116	111	111	111	106	106	106	102	102	102	100
1	114	112	110	108	112	110	108	106	106	104	103	102	101	100	99	98	97	95
2	110	106	102	99	108	104	101	98	101	98	96	98	96	94	95	93	92	90
3	105	100	96	92	103	99	95	92	96	93	90	94	91	89	91	89	87	86
4	101	95	90	87	99	94	89	86	92	88	85	90	87	84	88	85	83	82
5	97	90	85	82	96	89	85	81	88	84	81	86	83	80	85	82	79	78
6	93	86	81	77	92	85	80	77	84	80	77	82	79	76	81	78	76	74
7	90	82	77	73	89	81	77	73	80	76	73	79	75	73	78	75	72	71
8	86	78	73	70	85	78	73	70	77	73	70	76	72	69	75	72	69	68
9	83	75	70	67	82	75	70	67	74	69	66	73	69	66	72	69	66	65
10	80	72	67	64	79	72	67	64	71	67	64	70	66	63	69	66	63	62

LAMPS (number of lamps)

### LUMINAIRE BUDGETARY DIAGRAM



### ZONAL LUMEN SUMMARY

0°-10°	10°-20°	20°-30°	30°-40°	40°-50°	50°-60°	60°-70°	70°-80°	80°-90°
218 lm	521 lm	418 lm	104 lm	5.79 lm	1.13 lm	0.264 lm	0.136 lm	0.124 lm
90°-100°	100°-110°	110°-120°	120°-130°	130°-140°	140°-150°	150°-160°	160°-170°	170°-180°
0.122 lm	0.109 lm	0.124 lm	0.146 lm	0.287 lm	0.492 lm	0.544 lm	0.360 lm	0.107 lm



FLICKER

FLICKER CURVE (COMPLETE SAMPLED)



FLICKER FRAME (FRAME OF ONE FLICKER)



FLICKER FFT (FREQUENCY SCOPE OF FLICKER)



FLICKER RESULTS:

Flicker frequency:	n/a Hz
Flicker index:	n/a
Flicker percentage:	n/a %
SVM: (Visual flicker)	n/a

FLICKER CONDITIONS:

Sample rate:	n/a samples/second
--------------	--------------------